

FIGURE 42

ENGINE AND FUEL TANK MOUNTING

PART No.	QTY.	PART DESCRIPTION	NOTE	PROCESS REF.
F120	1	Strap Fuel Tank		
F119	1	Strap Fuel Tank		
F270	2	Bracket Fuel Tank Strap		
E101	2	Bearer Engine		
E102	2	Strut Engine		
E120	1	Rear Engine Plate		
E109	1	Front Engine Plate		
E110	1	Thrust Bar		
E111	1	Thrust Bar		
SE101	1	Anti Torque Tube		

FUEL TANK FITTING

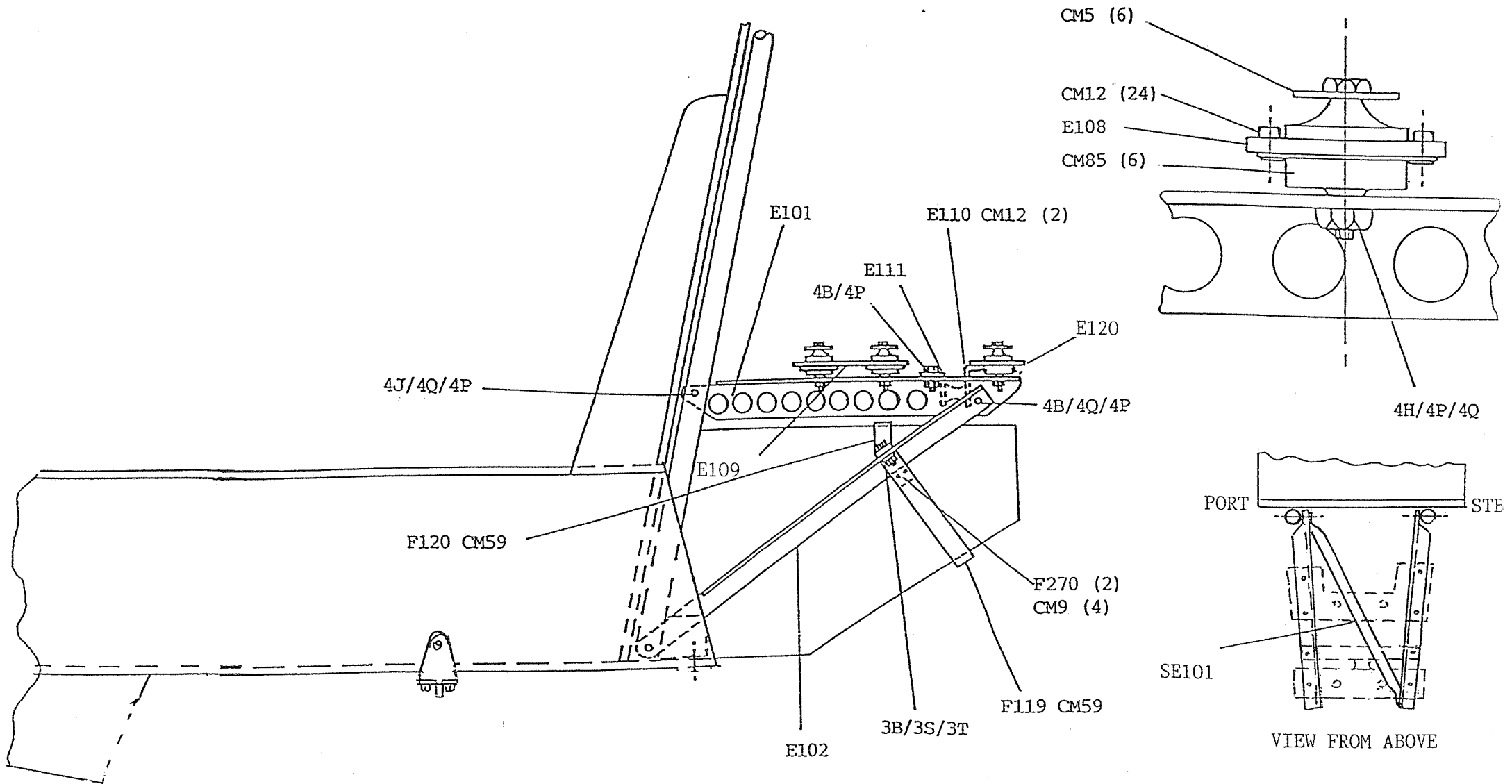
Position fuel tank onto hull, drill (2) 3/16" holes through feet and attach.

Fit top strap F120 and position to the point where it is snug and drill through F120 and E102.

Fit the two brackets, F270, and bolt together F120, E102 and F270.

Present strap F119 to assembly and when the fuel tank is comfortably retained by the straps without excess pressure, mark parts F119 with a felt pen, remove and drill and rivet (3 each side) the strap to F270.

FIGURE 42

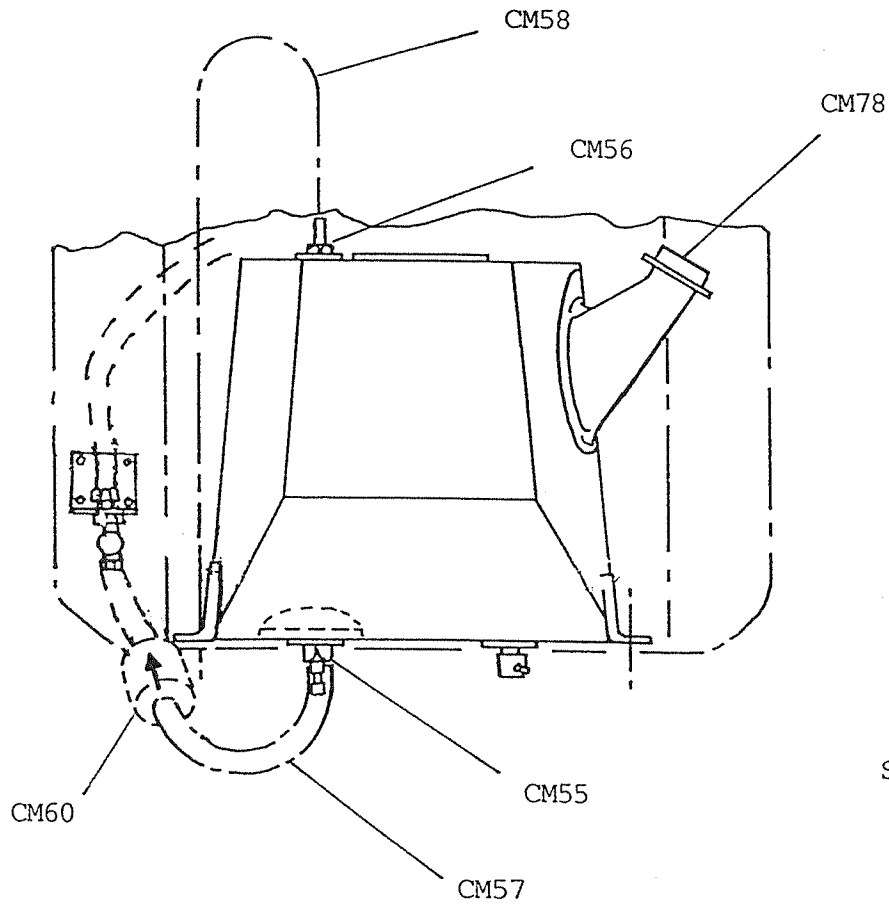


12th FEBRUARY, 1990

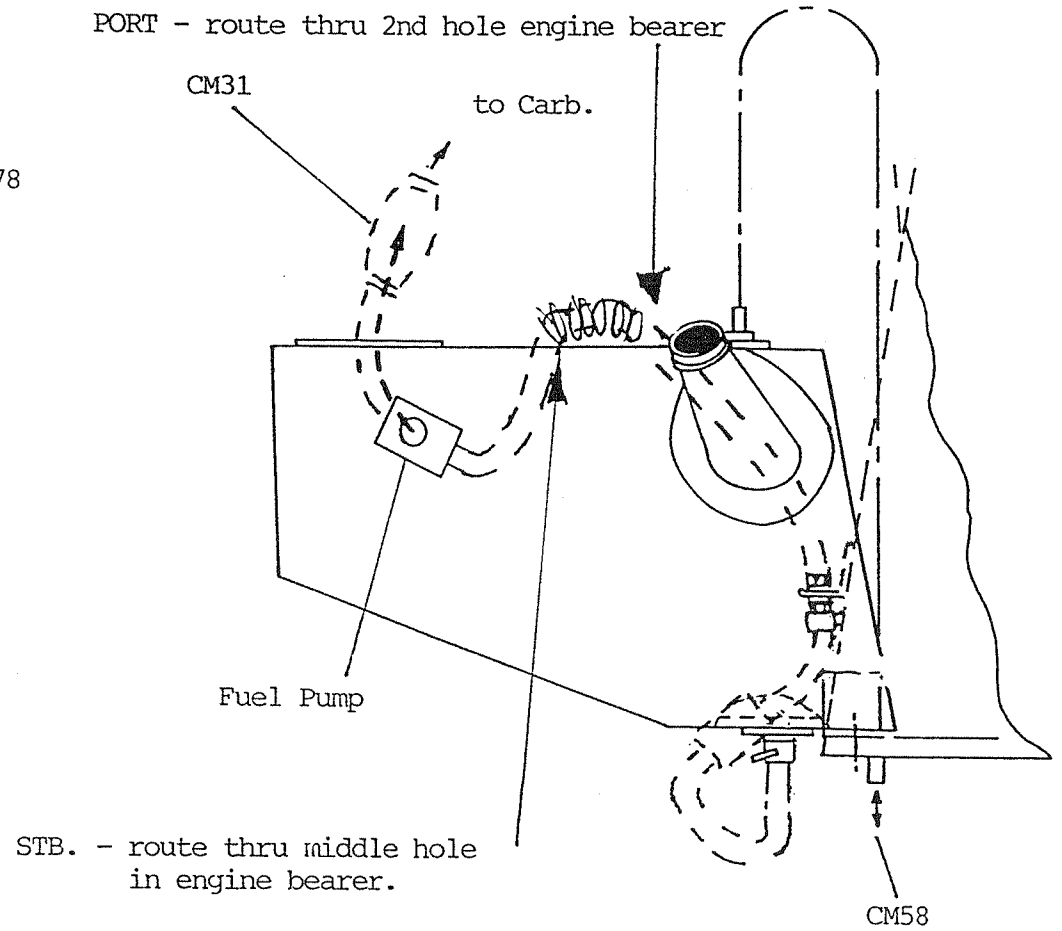
C/RM - CD

8-2

FIGURE 42



REAR VIEW



SIDE VIEW

FIGURE 43

ENGINE AND FUEL TANK MOUNTING

PART No.	QTY.	PART DESCRIPTION	NOTE	PROCESS REF.
E100	2	Spacer - Fuel Pump		
E121	2	Spacer Exhaust Bracket		
E122	1	Exhaust Bracket		

Fitting the engine is straight forward. First remove the plastic fan shield and cut out centre completely. Place the engine on the bearers and LOCTITE - PROCESS SHEET No. 4.1, the 4 M10 nuts and spring washers to the mounting nuts to secure.

Add the exhaust system.

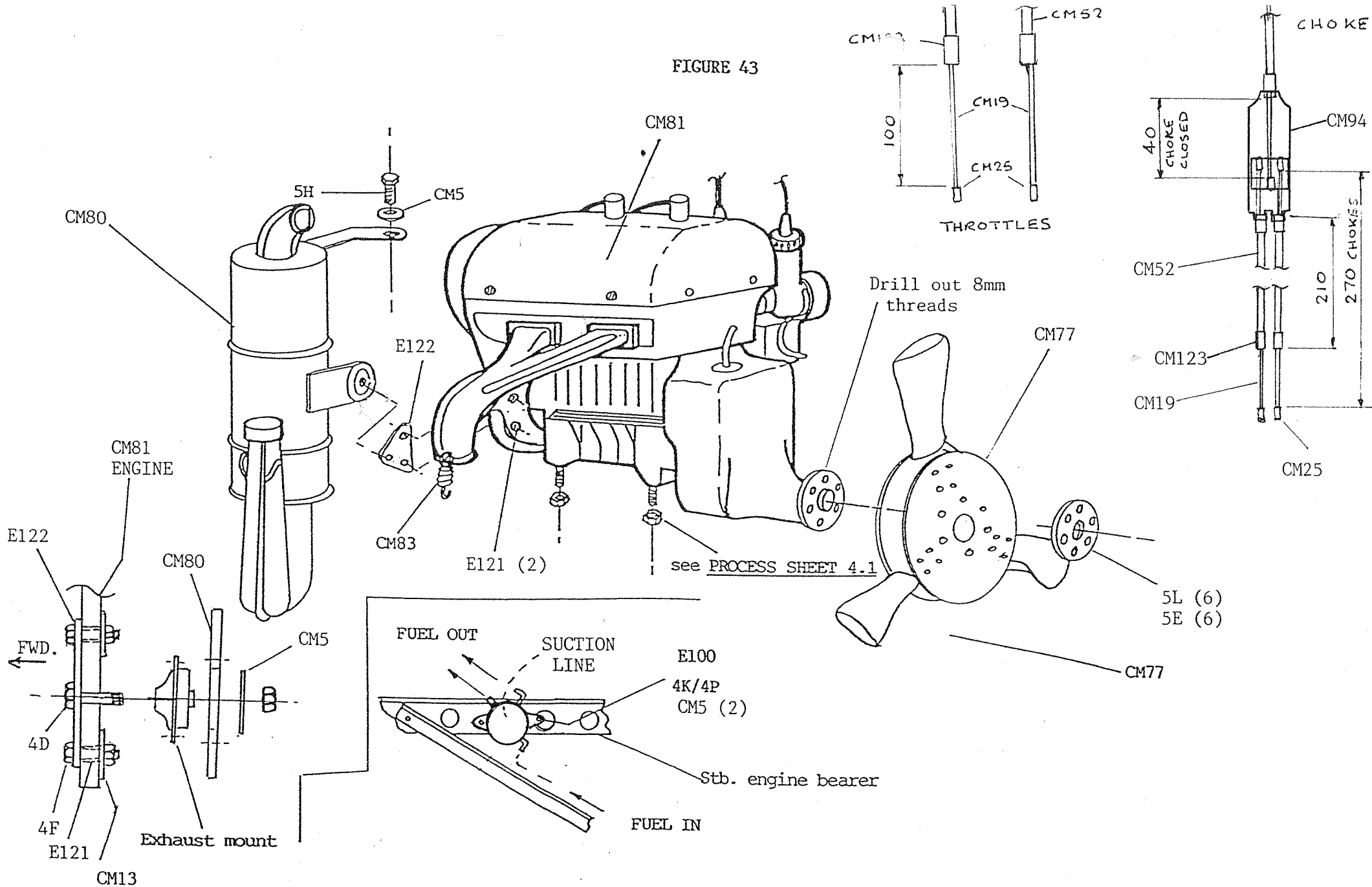
The fuel pump is remotely mounted. The centre outlet on the fuel pump is connected to the engine crankcase impulse nipple for suction. Note that in the fuel line, the in-line filter (CM60) is positioned before the primer bulb (CM31).

Attach the three solder nipples (CM25) to the throttle slides and choke system. Adjust these so that at least 2mm of play is present at the carburettor end when in the open position.

Mount the propeller and check TRACK which should be within  $\pm 2$ mm. Bolts should be evenly torqued to 10 ft/lbs.

Lockwire all exhaust springs, gear box breather, gearbox level screws and gearbox drain (after the gearbox has been filled with oil).

FIGURE 43

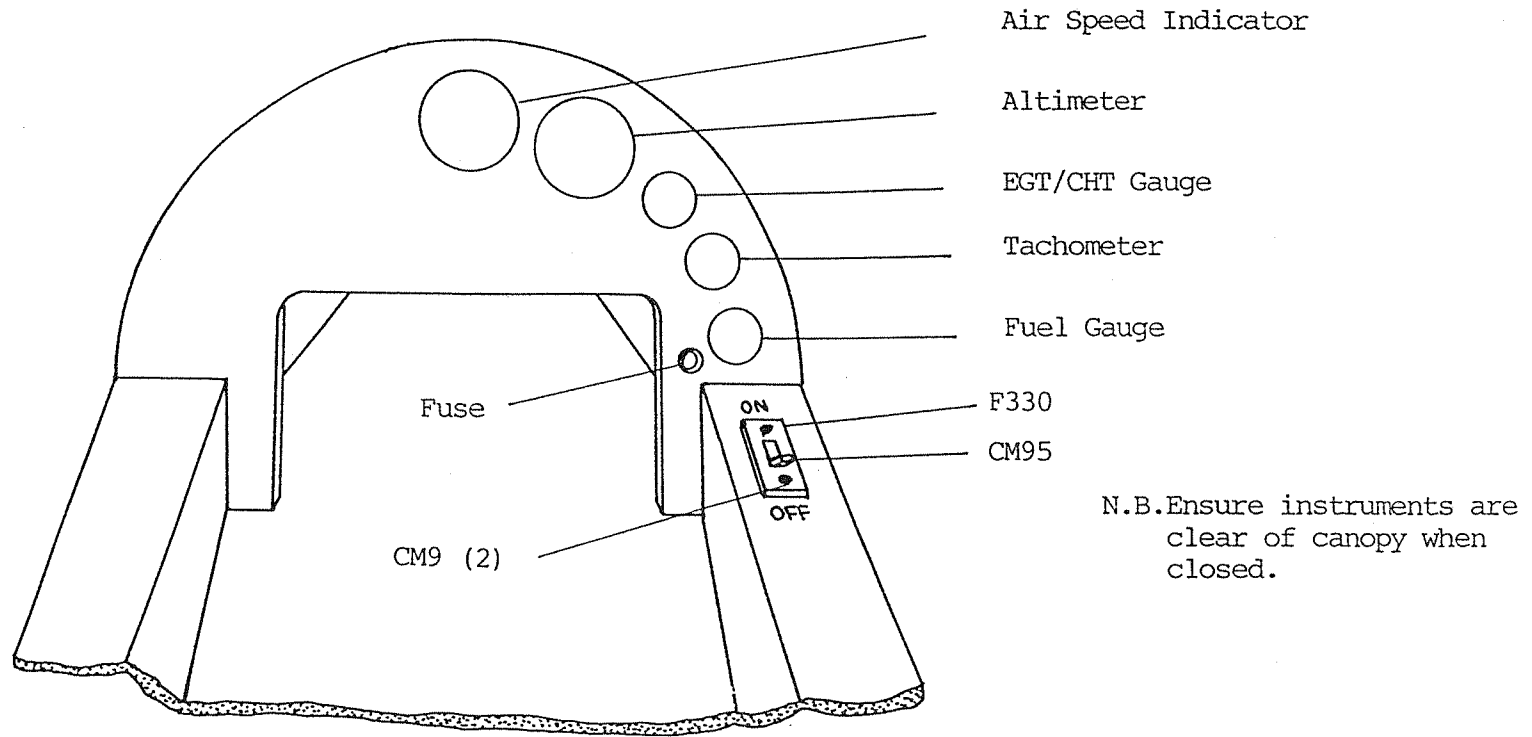


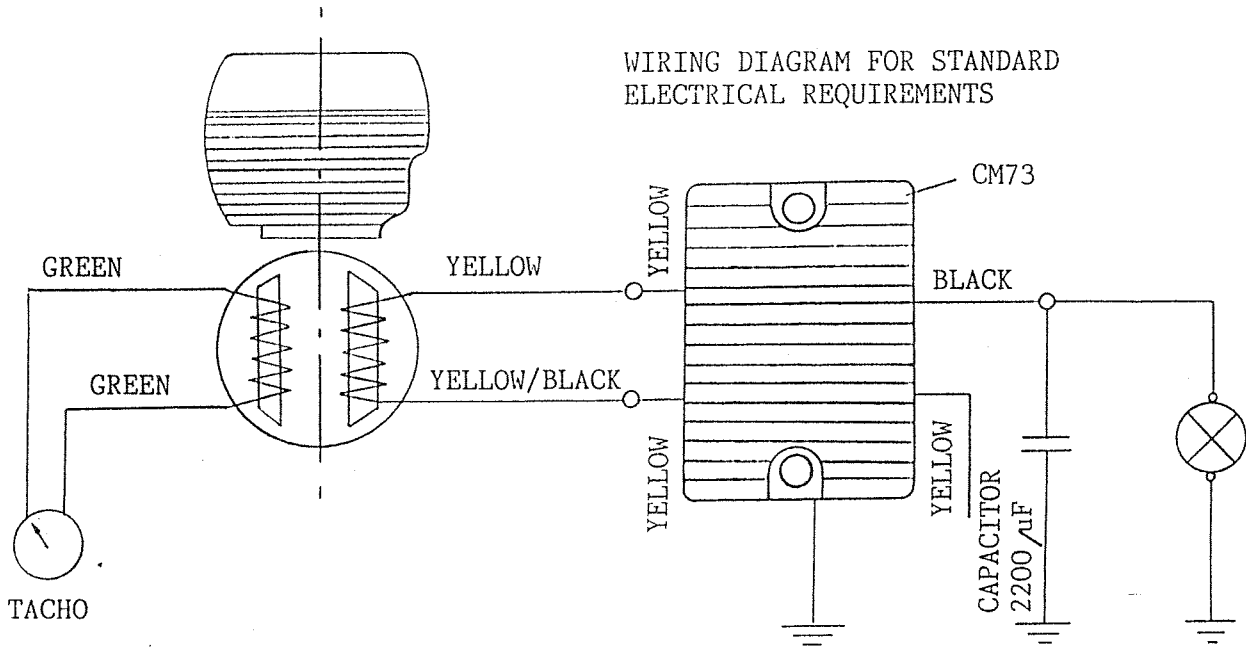
12th FEBRUARY, 1990

C/RM - CD

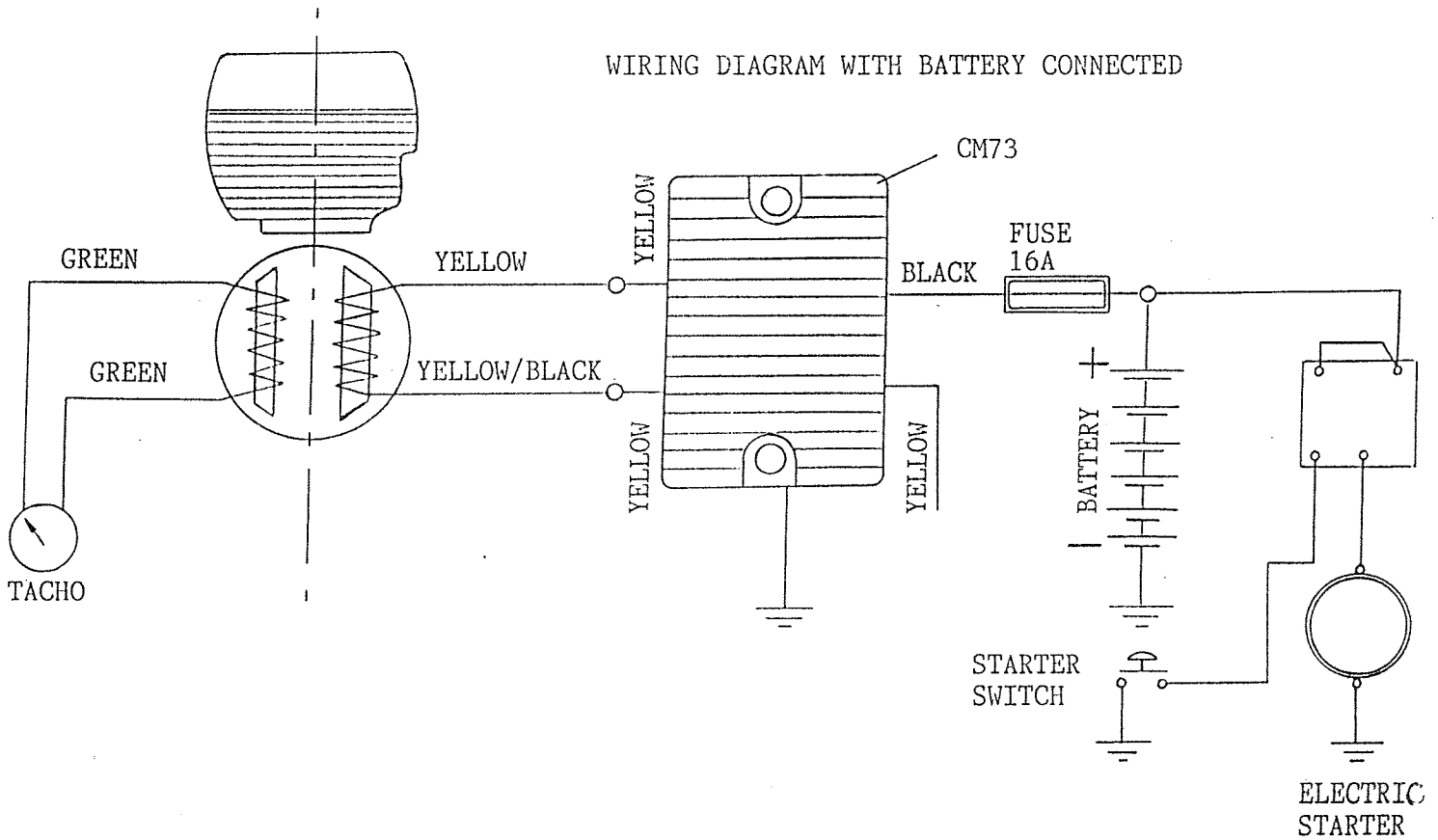
FIGURE 44

INSTRUMENT PANEL LAYOUT





TYPICAL USE:-  
INSTRUMENTS, LIGHTS



NOTE:- MINIMUM BATTERY CAPACITY  
9 AMPH.

TYPICAL USE:-  
ELECTRIC STARTER ETC.

FIGURE 46

ELECTRICAL WIRING DIAGRAM  
SINGLE IGNITION ENGINES

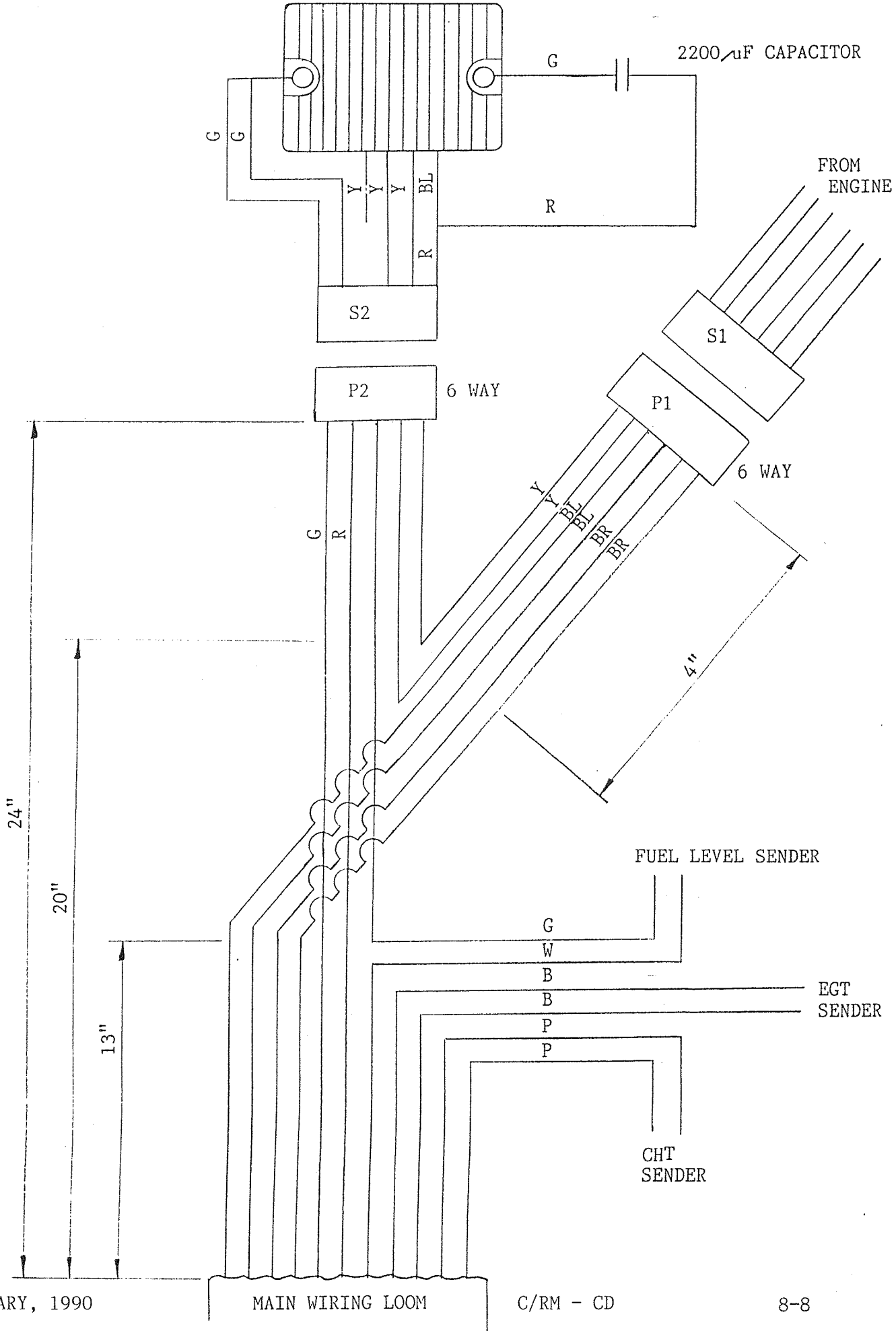
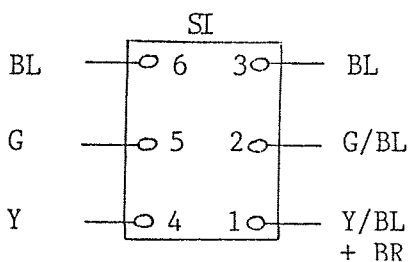
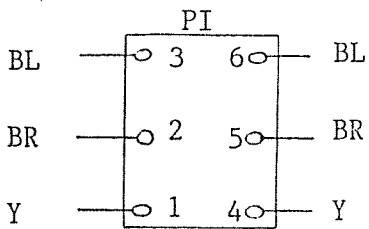
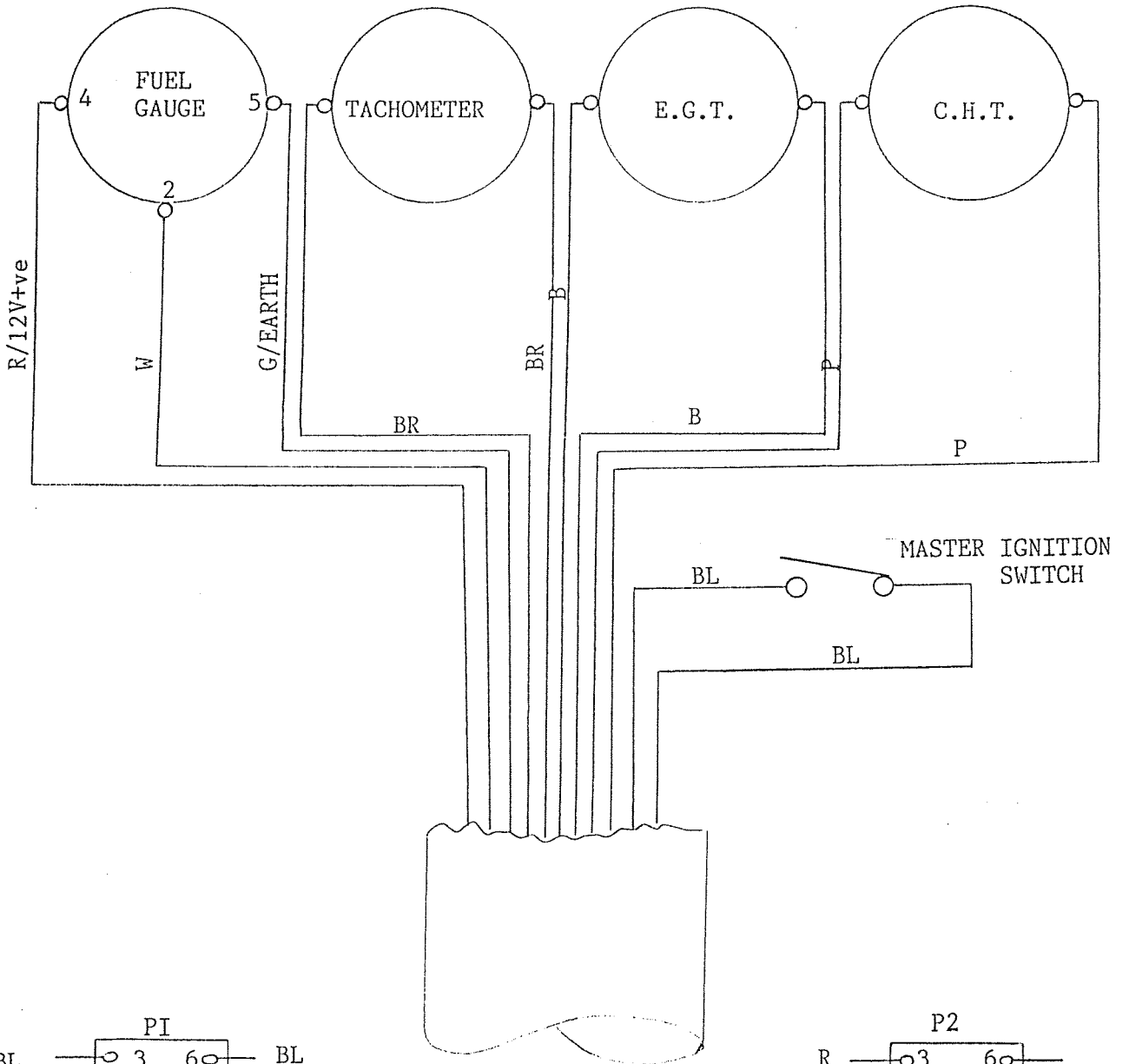




FIGURE 47

ELECTRICAL WIRING INSTRUMENTS

SINGLE IGNITION ENGINES



KEY	
RED	R
WHITE	W
GREEN	G
YELLOW	Y
PURPLE	P
BLUE	B
BLACK	BL
BROWN	BR

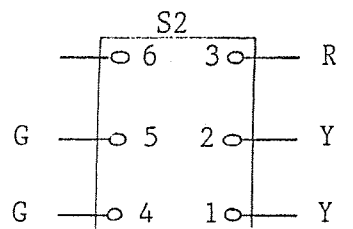
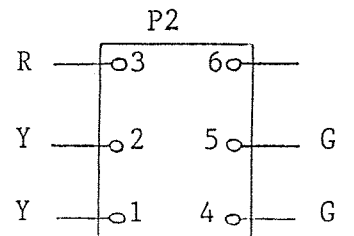
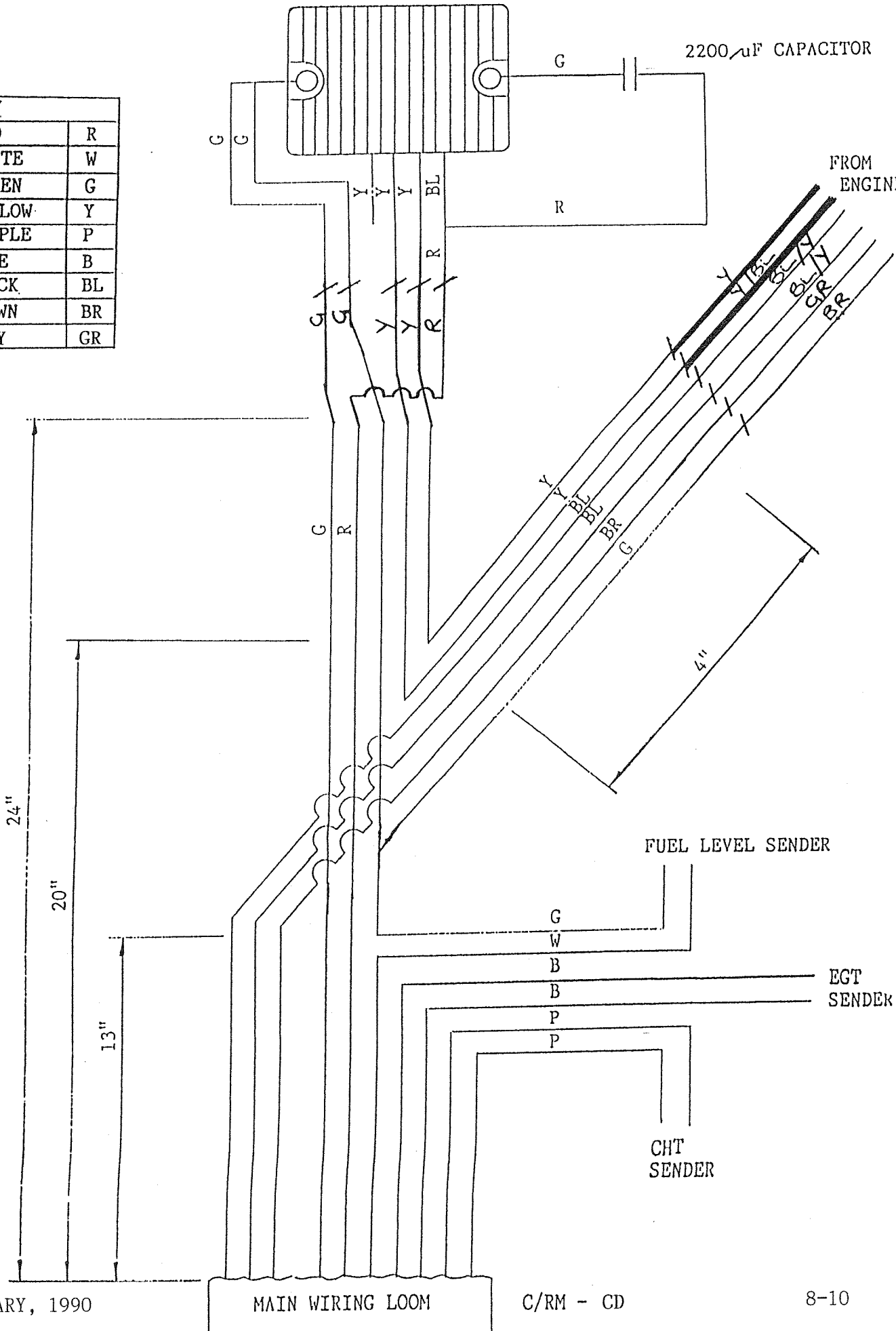


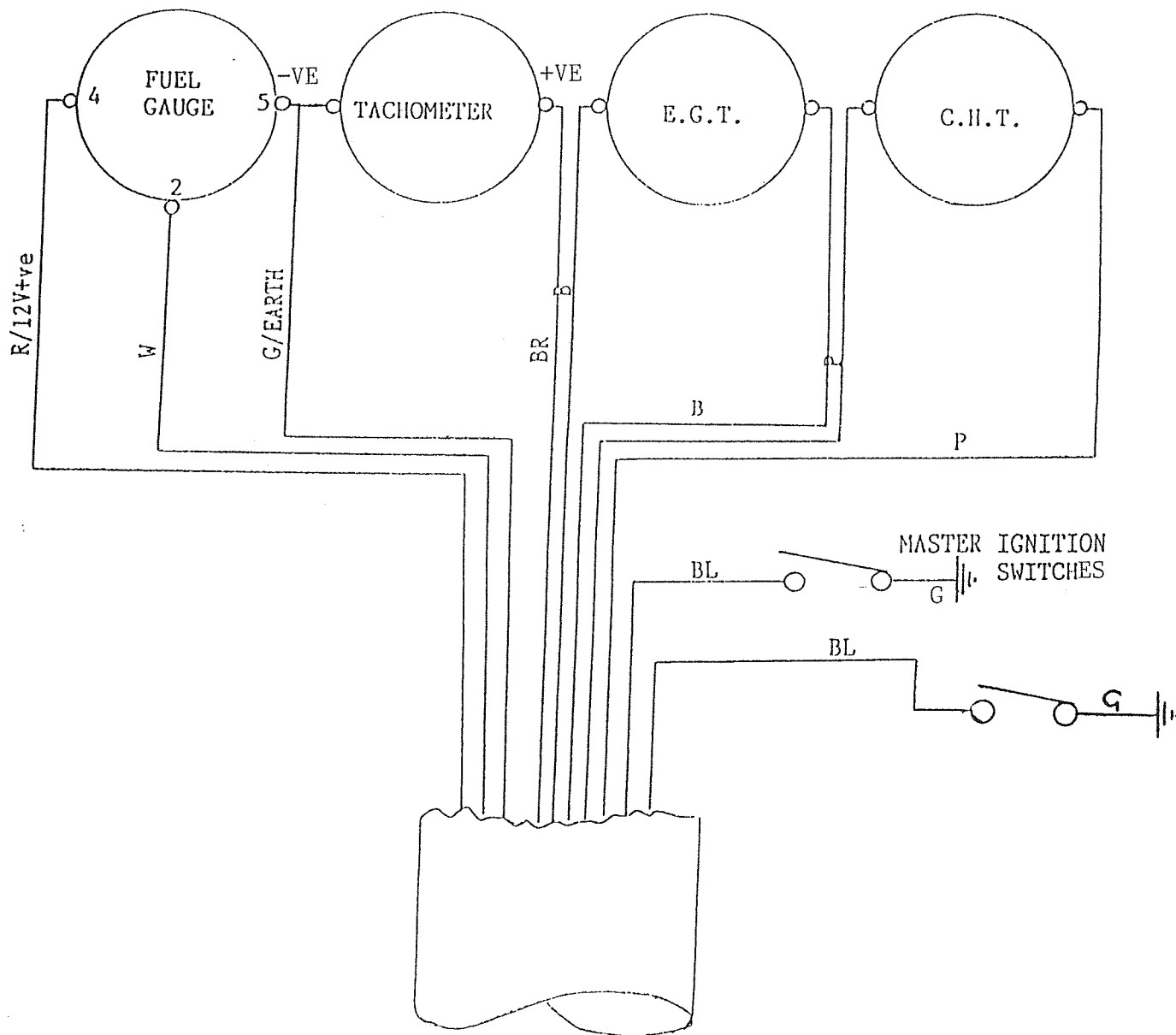
FIGURE 48

ELECTRICAL WIRING DIAGRAM  
DUAL IGNITION ENGINES

KEY	
RED	R
WHITE	W
GREEN	G
YELLOW	Y
PURPLE	P
BLUE	B
BLACK	BL
BROWN	BR
GREY	GR



ELECTRICAL WIRING INSTRUMENTS  
DUAL IGNITION ENGINES



KEY	
RED	R
WHITE	W
GREEN	G
YELLOW	Y
PURPLE	P
BLUE	B
BLACK	BL
BROWN	BR

INSPECTION

Engine installation inspection, pages 8-1 to 8-9 (single ignition engines) and pages 8-1 to 8-7 & pages 8-10, 8-11 (dual ignition engines) to be effected and recorded on page F.

Drain holes 3/16" Dia. are to be added to all separated panels on main wings, centre section, flap, aileron, tailplane & elevator. Use a soldering iron tip or heated small tube.

FINAL INSPECTION - FORM CFM 8 TO BE COMPLETED

12th FEBRUARY, 1990

C/RM - CD

8-12