

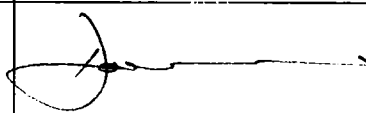
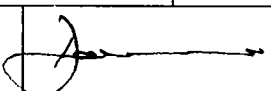
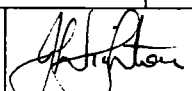
CFM Aircraft Limited

2D Eastlands Industrial Estate, Leiston, Suffolk IP16 4LL, United Kingdom
Telephone (44) 01728 832353 Fax (44) 01728 832944
Internet www.cfm-aircraft.co.uk

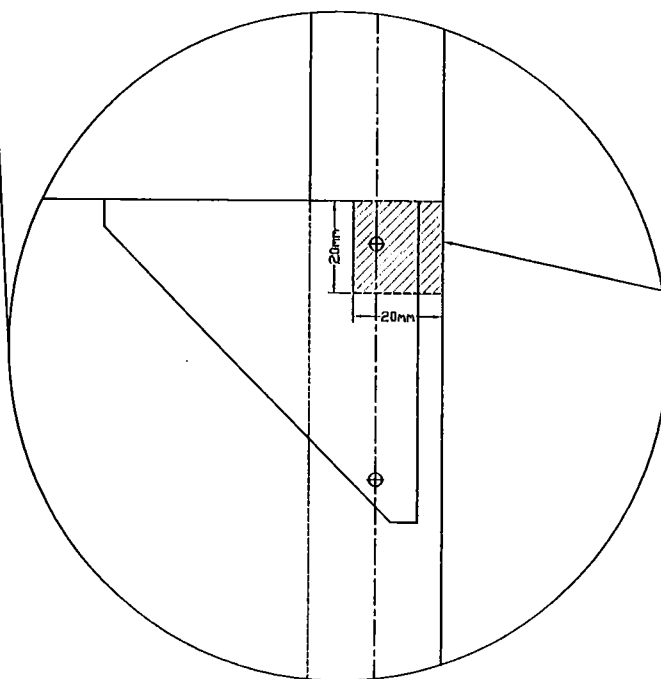
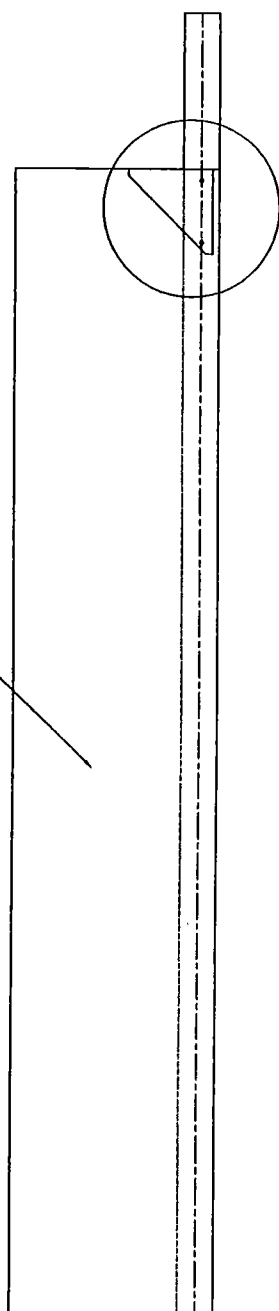
SERVICE BULLETIN No.: 12
ISSUE: 1
DATE: 14/07/98

CLASSIFICATION

This Service Bulletin has been classified as Mandatory by CAA

SUBJECT	Rudder Fin Post				
MODELS AFFECTED	B, C & D Series Shadow, Streak Shadow & Star Streak				
SERIAL Nos AFFECTED	All				
COMPLIANCE TIME	Before further flight				
PURPOSE	To identify possible cracks in the top of the rudder fin post in the vicinity of the top of the rudder fin where the fin post enters the boom tube. Rectify where necessary.				
ACTION	<p>Remove the rudder fin post from the aircraft. Remove a small section of the covering material (20mm x 20mm) on both sides of the fin around the gusset and the fin post itself at the root (see attached drawing). Inspect for cracks. It is not necessary to replace the covering material after inspection provided that the all remaining fabric is fully glued to the surface of the gusset.</p> <p>In the event that a crack is present, the entire rudder fin post (Part T 147) must be replaced prior to further flight with a new Rudder Fin Post Assembly (Part T189)</p> <p>In the event that no crack is present, a strengthening sleeve (Part T 188) must be installed in the top of the fin post, prior to the aircraft's next annual inspection (Modification 40)</p> <p>Record the inspection and replacement/modification in the aircraft logbook</p>				
MATERIAL REQUIRED	Fin Post Insert (T 188); Rudder Fin Post Assembly (T189)				
AVAILABILITY OF PARTS	From CFM Aircraft				
EFFECTIVE DATE	16 JULY 1998				
ISSUED BY					Date: 16/7/98
Chief Executive		Date 16/7/98	Design Engineer		Date 16/7/98

FIN
ASSEMBLY



COVERING TO BE
REMOVED FOR
INSPECTION